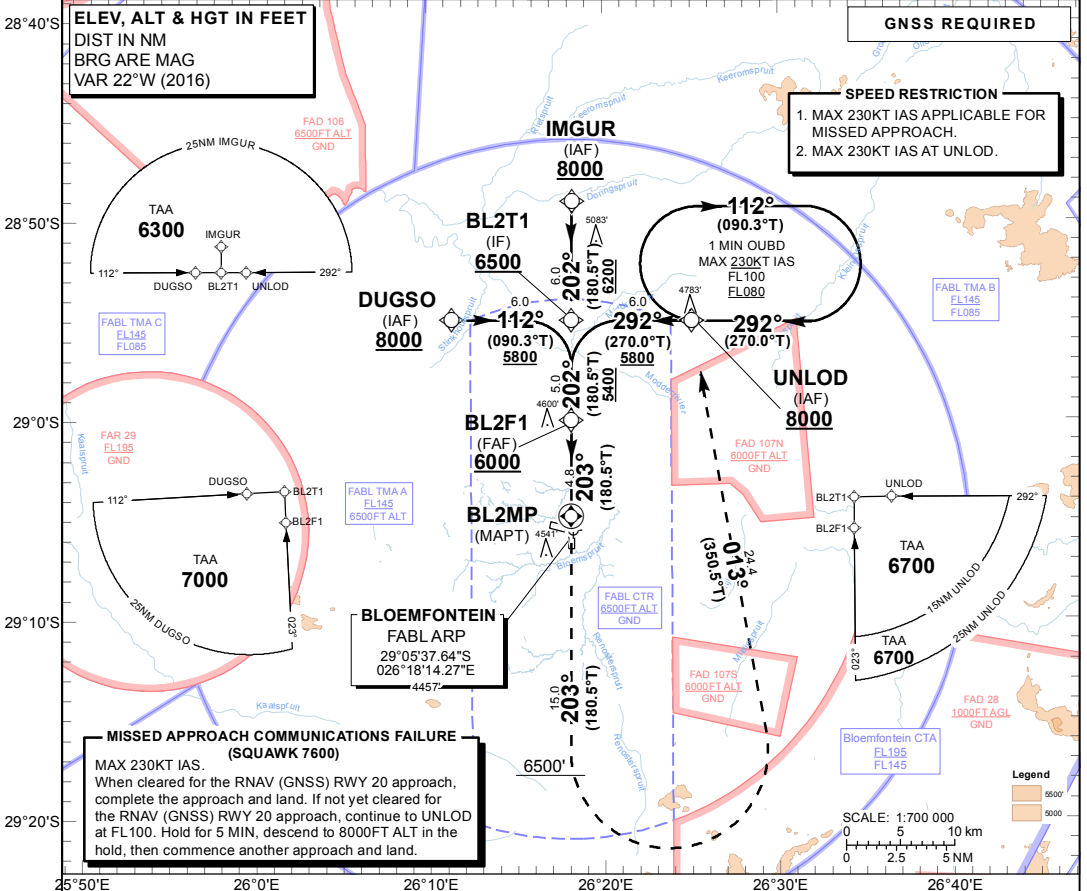


INSTRUMENT APPROACH CHART - ICAO **AERODROME ELEV 4457'**
HEIGHTS RELATED TO THR RWY 20 - ELEV 4421'

APP: 124.30
 APP E: 124.30
 APP W: 119.40
 TW: 120.80
 ATIS: 126.45

BLOEMFONTEIN (BRAM FISCHER INTL) RNAV (GNSS) RWY 20
 CAT A - D



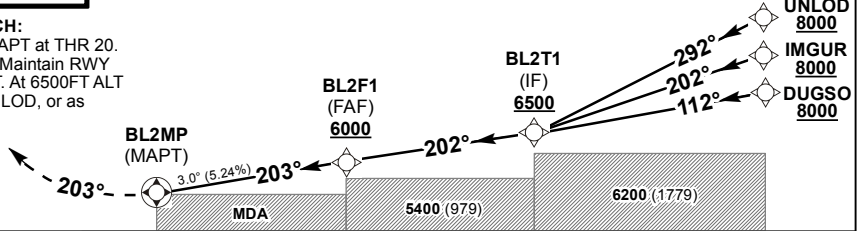
MISSED APPROACH COMMUNICATIONS FAILURE (SQUAWK 7600)
 MAX 230KT IAS.
 When cleared for the RNAV (GNSS) RWY 20 approach, complete the approach and land. If not yet cleared for the RNAV (GNSS) RWY 20 approach, continue to UNLGD at FL100. Hold for 5 MIN, descend to 8000FT ALT in the hold, then commence another approach and land.

Distance from THR 20	5	4.8	4	3	2	1
ADVISORY ALT (HGT)	6070 (1649)	6000 (1579)	5750 (1329)	5430 (1009)	5110 (689)	4790 (369)

TRANSITION ALT 8000
TRANSITION LEVEL ATC

INA ALT 8000

MISSED APPROACH:
 MAX 230KT IAS. MAPT at THR 20. Climb to 8000' ALT. Maintain RWY track to 6500FT ALT. At 6500FT ALT turn left direct to UNLGD, or as directed by ATC.



RDH 50

THR ELEV 4421
 NM to/from THR RWY 20

MIN TEMP: -10°C					GS	KT	80	100	120	140	160	180
MAX TEMP: +62°C	A	B	C	D	FAF to THR 20	M:S	3:36	2:52	2:24	2:03	1:48	1:36
					Rate of descent	FPM	425	531	637	743	850	956
	VNAV	OCA(H)			NOTE:							
	LNAV	4920 (499)			1. Hold may be conducted partially outside controlled airspace.							
	RVR	1500m	2000m		2. LNAV/VNAV RoD is 5.24%.							
	ALS OUT	1500m	2000m		3. MAX speed restriction of 230KTS IAS in the missed approach.							
Clircling	5000 (543)	5257 (800)	6099 (1642)		4. MAX holding speed of 230KTS IAS.							
					5. BaroVNAV operations not authorised below -10°C and MAX VPA 3.5°.							
					6. No turns prior MAPT.							

CHANGE: Procedure ALT from BL2T1 to BL2F1 to BL2MP