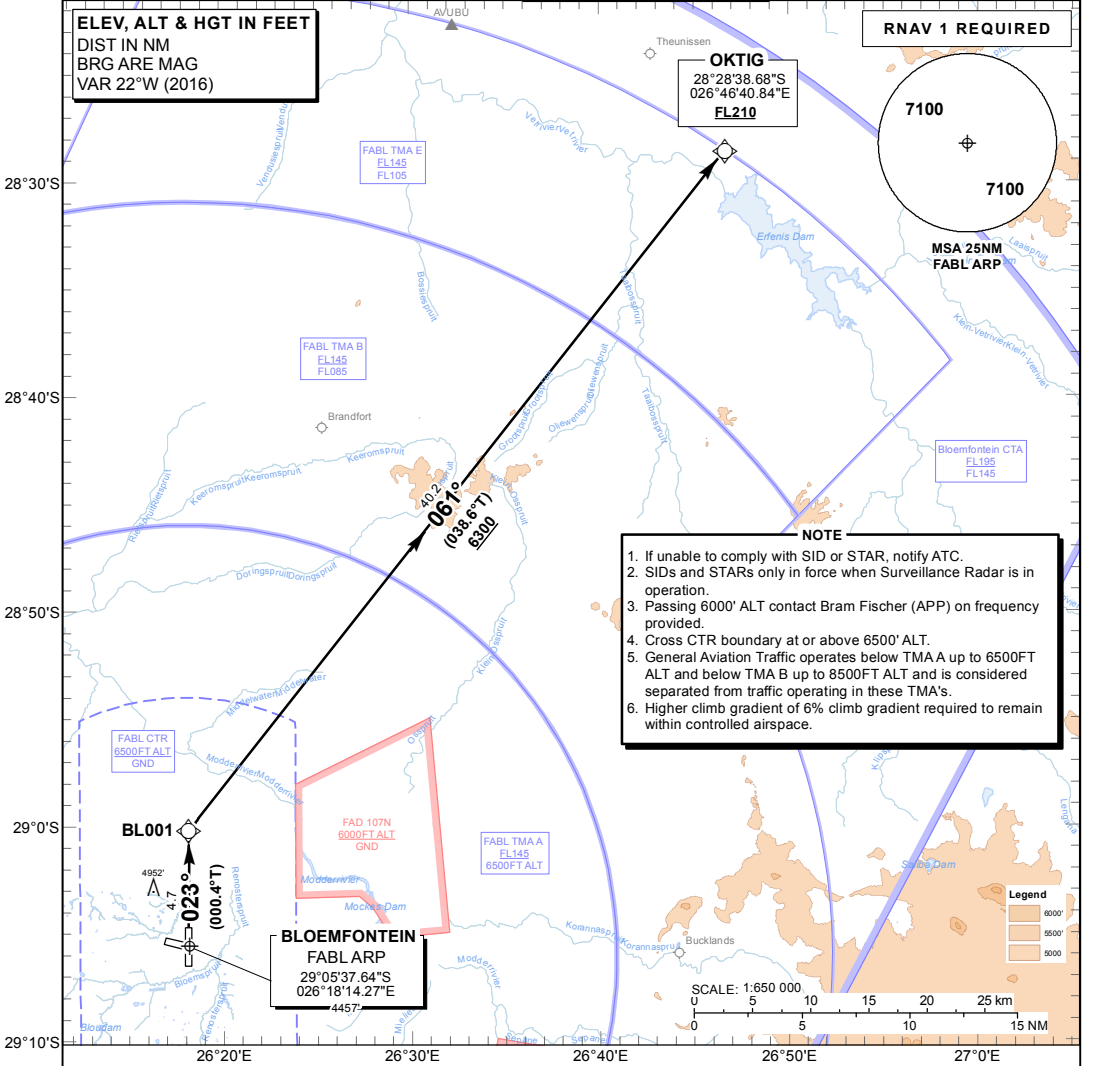


**STANDARD DEPARTURE
CHART -
INSTRUMENT
(SID)**

TRANSITIONAL ALTITUDE
8000'
TRANSITIONAL LEVEL
ATC

APP: 124.30
APP E: 124.30
APP W: 119.40
TWR: 120.80
ATIS: 126.45

**BLOEMFONTEIN
(BRAM FISCHER INTL)
RNAV (GNSS) RWY 02
OKTIG 1B**



CHANGE: Procedure text revised

**OKTIG 1B:
RWY 02**

Climb to FL140. Maintain RWY track to BL001, turn right and route to OKTIG. Further climb will be under Radar Control. At OKTIG set course as per flight plan.

Climb gradient restricted to a minimum of 6.0% until BL001

- 6.0% @ 140KT IAS = 851 FPM
- 6.0% @ 180KT IAS = 1094 FPM
- 6.0% @ 220KT IAS = 1337 FPM

COMMUNICATION FAILURE PROCEDURE (Squawk 7600)

Comply with the OKTIG 1B RNAV (GNSS) SID, climbing to FL210.

Aircraft wishing to return to Bram Fischer INTL Airport must continue to OKTIG. At OKTIG, turn right to UTONU, and enter the UTONU RNAV (GNSS) hold at FL200 for a minimum of 5 MIN. Comply with the "After UTONU" 1A STAR RWY 02 Communication Failure Procedure.