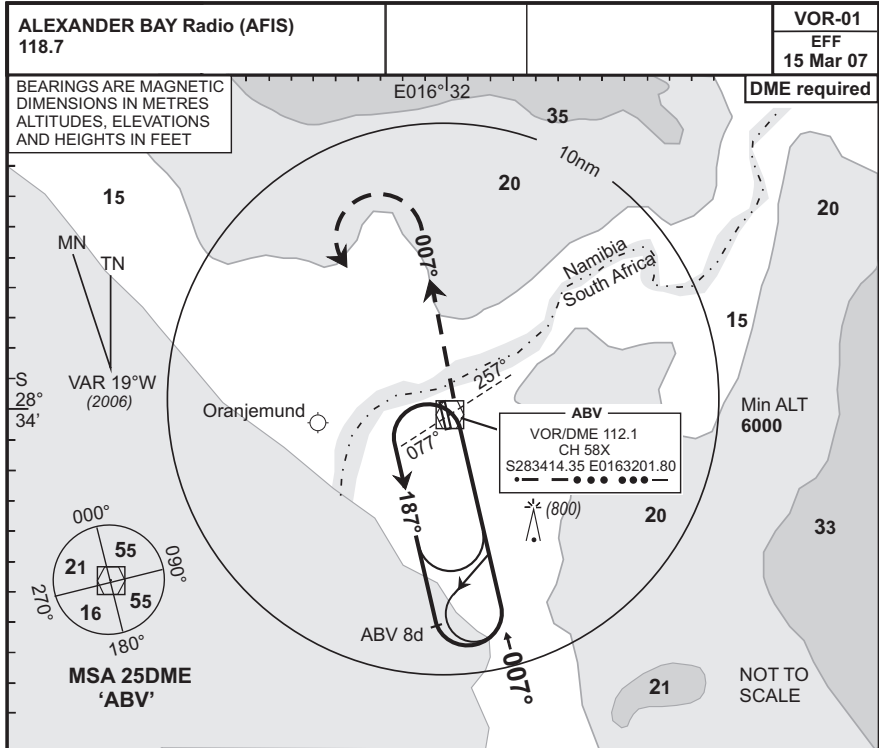


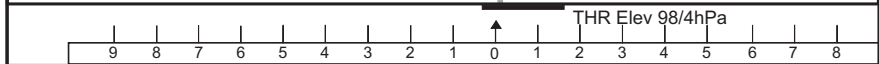
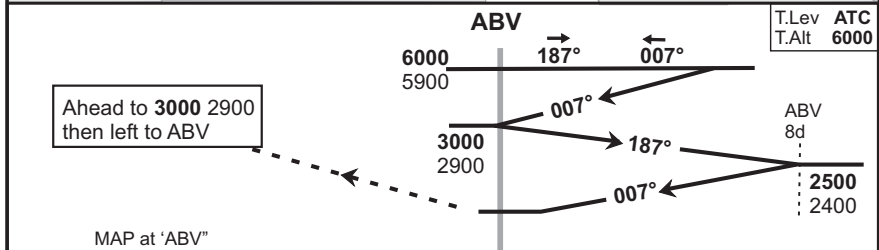
**INSTRUMENT APPROACH CHART**    **AERODROME ELEV 98**  
**HEIGHTS RELATED TO**  
**THR RWY 01-ELEV 98**

**ALEXANDER BAY**  
**VOR-A Rwy 01**  
 (Cat A, B, C)

FAAB



© AV/DIRECT / 131206



1. This procedure is conducted outside controlled airspace, entirely at the discretion of the pilot in command.
2. Initial approach altitude 6000 or higher MSA. Descend in the hold to 3000 FT ALT.
3. Procedure turn approach applicable only within 30° of the outbound heading. Use phraseology "Executing procedure turn approach".
4. RoD from ABV 8d computes at 3° angle of descent.
5. Circle to land at the discretion of the pilot in command.

OCA/H					8DME - THR						
Cat of ACFT	A	B	C	D	Speed	Kt	80	100	120	140	160
Straight	1272	1272	1272	N/A	Time	M:s	5:28	4:22	3:09	3:07	2:44
-in					Rate of Descent	Fpm	430	530	640	740	850
Approach	N/A				Advisory Alt/Hgt	7d	6d	5d	4d		
Circling: As per note 5.					8d to VOR/DME	2180(2400)	1860(1760)	1550(1452)	1230(1130)		
Rev: New Format.											WGS-84

CAA South Africa